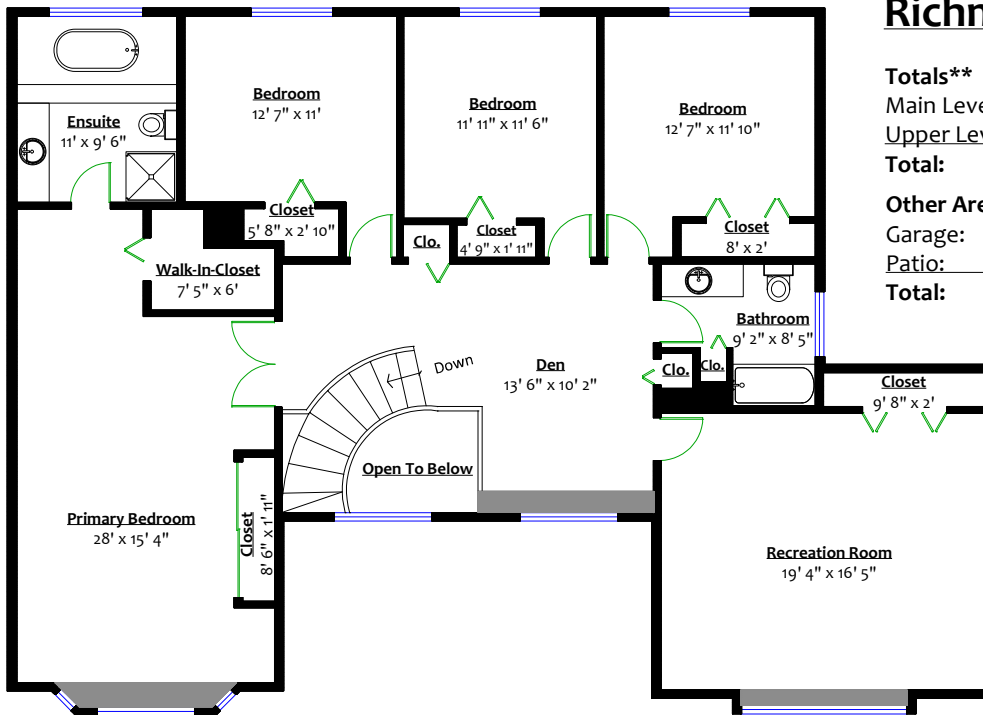


10160 No. 4 Road, Richmond, B.C.



Totals**

Main Level:	2,264 sq. ft.
Upper Level:	1,891 sq. ft.
Total:	4,155 sq. ft.

Other Areas**

Garage:	514 sq. ft.
Patio:	623 sq. ft.
Total:	1,137 sq. ft.



Sidney Hui
604.889.3218
www.SidneyHui.com

